



## GOLD PROCESSING MOU WITH GEKKO SYSTEMS

ASX ANNOUNCEMENT

23 SEPTEMBER 2015

**Mantle Mining Corporation Limited (ASX: MNM)** is pleased to announce that it has executed a Memorandum of Understanding (MOU) with Gekko Systems Pty Ltd (Gekko) for the provision of mineral processing solutions to support Mantle's resource development projects.

### Highlights:

- Gekko is a global leader in the provision of mineral processing solutions to the gold and coal sectors and wishes to work with industry to provide alternative and innovative contract design, construct and operational offerings such as site and regional based processing facilities.
- Gekko and Mantle have agreed to mutually evaluate the potential for Gekko to design, construct and/or operate onsite gold processing facilities to support Mantle's project sites. These facilities are targeting production of high grade concentrates for transport to regional gold processing plants.
- Gekko will also evaluate the potential to Build, Own, Operate (BOO) new regional intensive cyanidation facilities to process high grade gold concentrates delivered from Mantle's gold projects.

On 8 July 2015, Mantle announced positive results from a scoping study for reopening the Norton Gold Mine in central QLD. Preliminary process flowchart designs developed for the project are currently being confirmed and optimised based on detailed laboratory trials being carried out at Gekko's Ballarat facilities.

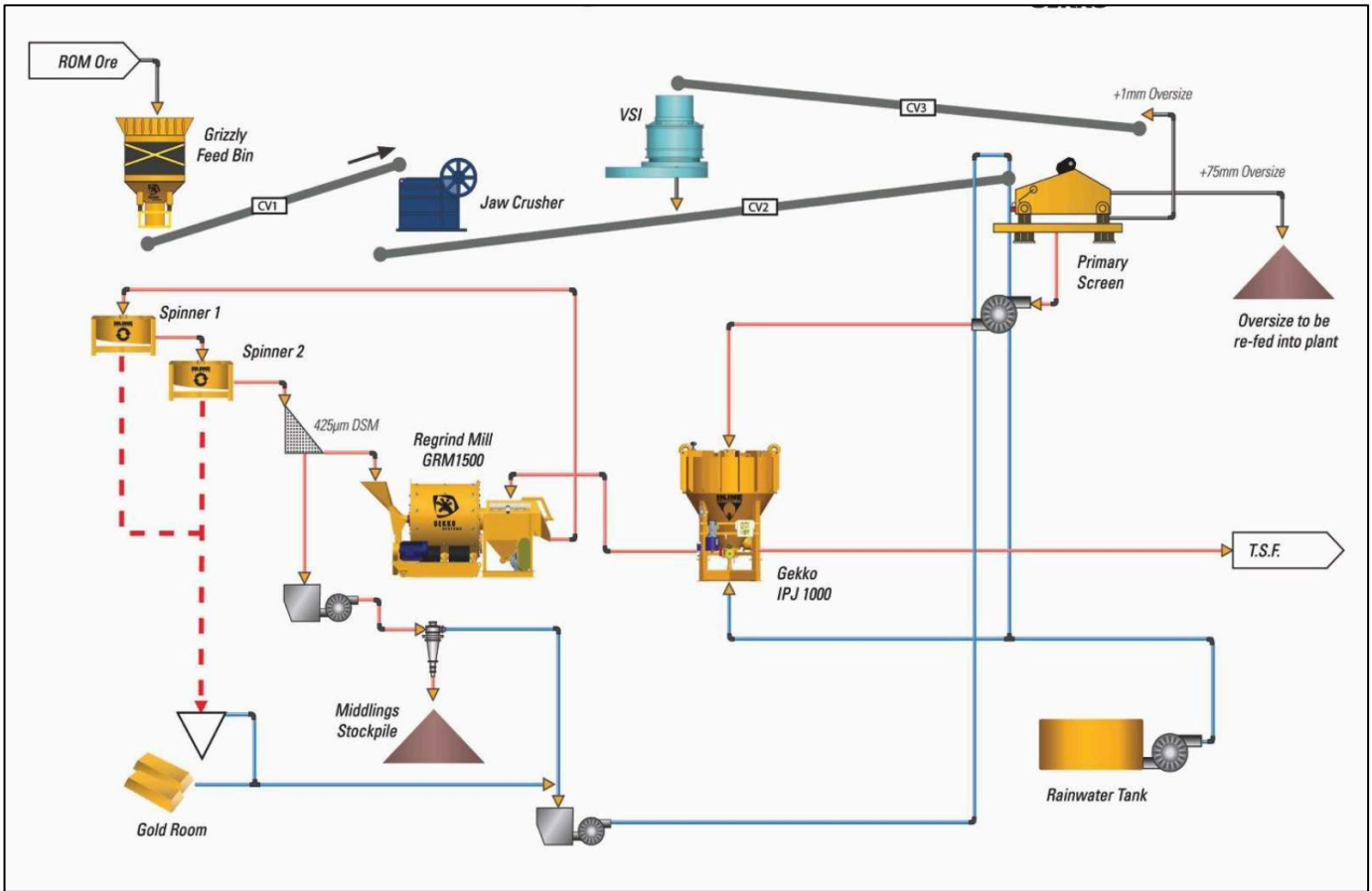
On 14 August 2015, Mantle announced that it had reached agreement to acquire the rights to a 95% interest in Morning Star Gold NL in VIC. Gekko previously designed and constructed the 80,000 tonne per year gold processing plant at the Morning Star Gold Mine, and will be assisting Mantle to recommission the plant.

For further information please contact:

Ian Kraemer  
Managing Director

Mantle Mining Corporation Limited  
[ikraemer@mantlemining.com](mailto:ikraemer@mantlemining.com)  
P: +61 7 3310 8932

**Figure 1:** Morning Star gold mine Gekko processing plant schematic.



**Picture 1:** Morning Star processing plant, paste backfill plant, winder headframe, and mine offices.

